

This Deben Entrance sketchmap is kindly sponsored by ...

For the latest updates and news visit www.eastcoastrivers.com

August 2011 Edition

River Deben Entrance

Photograph taken 1st May 2011 - Height of tide 0.9m above Chart Datum





- Marina
- Ashore Storage
- Refits & Repairs
- Rigging
- Marine Electronics
- Marine Engineering
- Stainless Fabrication
- Spray Painting
- Chandlery & Outdoor

Shop online at www.foxsonline.com

FOX'S MARINA & BOATYARD
Ipswich Suffolk IP2 8SA
T: +44 (0)1473 889111
E: foxs@foxsmarina.com
W: www.foxsmarina.com



Suffolk Yacht Harbour

THE EAST COAST YACHTSMAN'S FAVOURITE HAVEN

<ul style="list-style-type: none"> • Permanent & visitor berths • Fuel for diesel & petrol • Extensive chandlery • Bottled gas • Shower & toilet facilities • Telephone • Local taxi service • Ample car & trailer parking • Slipway for launching • Haven Ports Yacht Club • Laundry 	<ul style="list-style-type: none"> • Reinforced concrete slipway • Scrubbing grids • Boat hoists (10 & 60 tonnes) • 2 boat cranes (5 & 20 tonnes) • Rigging & sail repairs • Top side resprays • Yacht brokerage • Marine electronic sales • Pressure washing • Shipwright & boatbuilding • Winter storage & hardstanding
--	--

Suffolk Yacht Harbour, Levington, Ipswich, Suffolk IP10 0LN
Telephone 01473 659465/659240 Web www.syharbour.co.uk

TIDEMILL YACHT HARBOUR

WWW.TIDEMILLYACHTHARBOUR.CO.UK
VISITORS ALWAYS WELCOME



'Four Gold Anchor Award'
Presented by the Yacht Harbour Association
High Standards of Service

Tidemill Way, Woodbridge, Suffolk IP12 1BP
T: 01394-385745 F: 01394-380735 VHF: Ch80, M&37



Trust us to bring you the best sailing products at amazing prices. Whether you're a dinghy sailor or a circumnavigating world cruiser, we have everything for your boating needs!

<p>Electronics GPS / Plotters RIBs / Inflatables Outboard Engines Paints & Antifoul Deck Hardware</p>	<p>Sailing Clothing Safety Equipment Liferafts Ropes & Rigging Books & Charts Dinghy Spares</p>
--	--

Take a look at our comprehensive online shop
www.seamarknunn.com

Tel - 01394 451000
Email - sales@seamarknunn.com
400 High Road, Trimley St. Martin,
Felixstowe, Suffolk IP11 0SG



atlanticrigging

The Complete Yacht Rigging Service

Supply & repair of standing / running rigging, splicing and rig tuning

Unit 10, The Sidings, Wilford Bridge Road
Melton, Woodbridge IP12 1RB

Telephone: 07887 955817
Phone / Fax: 01394 610324
Email: info@atlanticrigging.co.uk

www.atlanticrigging.co.uk




SUFFOLK SAILS

Tel 01394 386 323

Sailmaking - Repairs - Servicing
Snuffers - Custom Covers - Spray Hoods
and much more

www.suffolksails.net
9 Tidemill Way, Woodbridge, Suffolk IP12 1BY

DEBEN INNS LTD

Butt & Oyster
Newbourne Fox
Maybush
Wilford Bridge
Plough & Sail

Come and join us at one of our inns. We offer fine food & drink from some of the most scenic riverside and countryside locations on the East Coast.

www.debeninns.co.uk



MARINE SURVEYS

(EAST & SOUTH LTD)

YACHT & SMALL SHIP SURVEYOR
PRE-PURCHASE & INSURANCE SURVEYS
MCA CODE OF PRACTICE COMPLIANCE EXAMINER

www.stephenreadsurveys.com TEL - 01394 670872 or 07860 191768



Please take one

FREE PUBLICATION

All donations to marine rescue services are greatly appreciated
Donations to maintain this service may be made through our website

www.eastcoasttravellers.com for updates
River Deben Entrance
 August 2011 Edition

Based on survey conducted on
18th March 2011

Survey by MARINE SURVEYS EAST & SOUTH LTD
 on behalf of eastcoasttravellers.com
 Conducted by S. Read & C. Woods
 For pilotage information call 'Old Times'
 on **VHF CH6** or Tel **01594 220106** or **07803 476621**
 also Stephen Read on **07860 191766**

Waypoint Information

Woodbridge Haven 51° 58.200 N 01° 23.850 E
 West Knoll 51° 58.359 N 01° 23.468 E
 Mid Knoll 51° 58.759 N 01° 23.411 E

Notes

Depths in meters reduced to LAT based on tidal data provided by the British Oceanographic Data Centre
 Positions referred to WGS 84 Datum
 Negative values on depth labels represent drying heights
0.5m maximum depth over bar at Lowest Astronomical Tide

*Erosion near sea defences
 Displacement of rock armour resulting from erosion may make landing or navigation close inshore potentially hazardous.
 Armour replenishment is ongoing.*

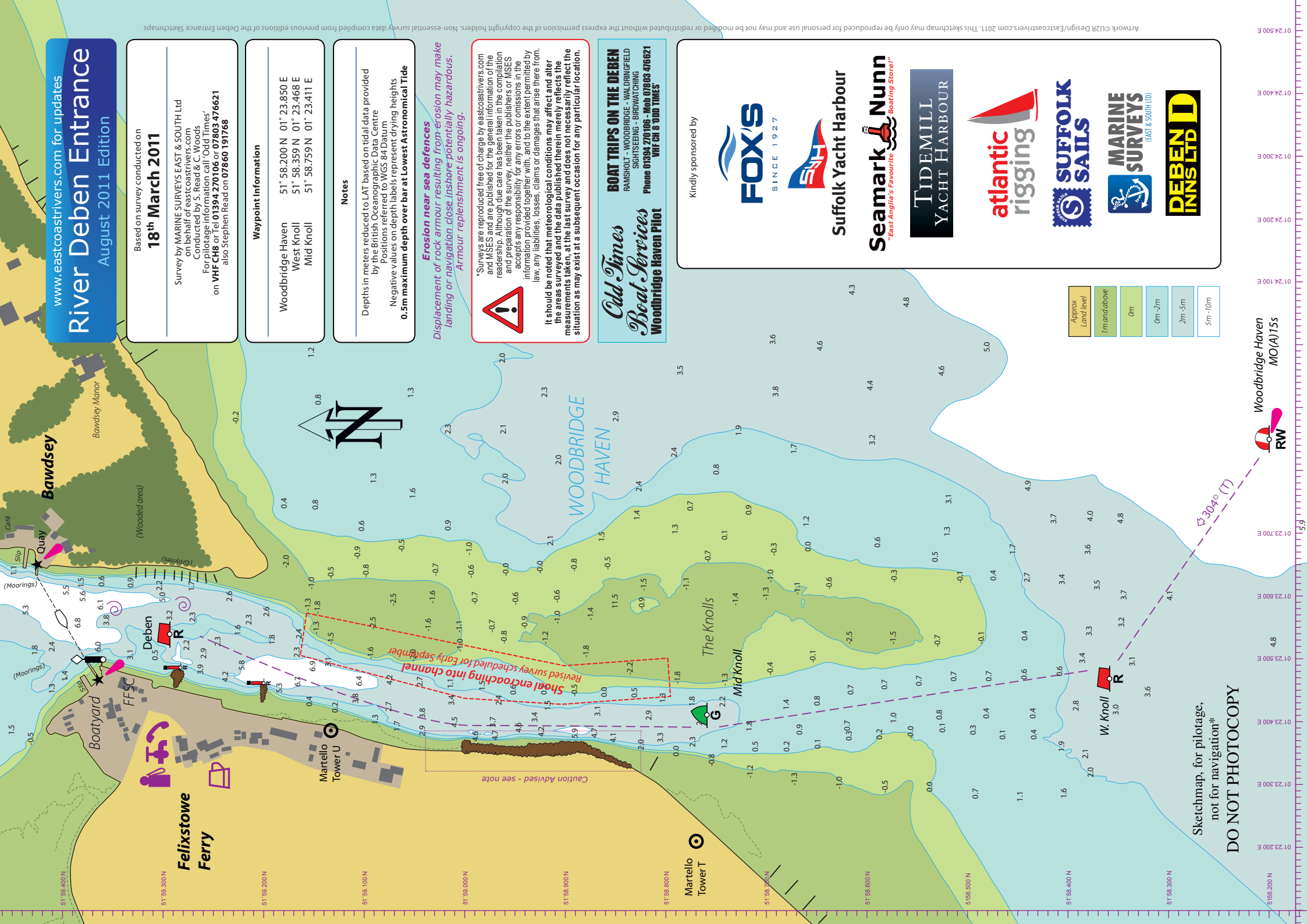


*Surveys are reproduced free of charge by eastcoasttravellers.com and MSES and are published for the general information of the readership. Although due care has been taken in the compilation and preparation of the survey, neither the publishers or MSES accepts any responsibility for any errors or omissions in the information provided together with, and to the extent permitted by law, any liabilities, losses, claims or damages that arise there from.
It should be noted that meteorological conditions may affect and alter the areas surveyed and the data published therein merely reflects the measurements taken, at the last survey and does not necessarily reflect the situation as may exist at a subsequent occasion for any particular location.

*Old Times
 Boat Services*
Woodbridge Haven Pilot

BOAT TRIPS ON THE DEBEN
 RAMSHOLT - WOODBRIDGE - WALDRINGFIELD
 SIGHTSEEING - BIRDWATCHING
 Phone 01594 270106 - Mob 07803 476621
VHF CH 8 0DD TIMES

Kindly sponsored by



Sketchmap, for pilotage,
 not for navigation*
DO NOT PHOTOCOPIY