

THE HARBOUR INN

Blackshore, Southwold IP18 6TA
Tel. 01502 722381

Located by the River Blyth and sometimes in it, serving Adnams ales & wines 11am-11pm every day & fresh seafood 12noon-9pm every day



WDC Harbourmasters office welcomes you to Southwold Harbour

Please observe
Slow speed within Harbour
Report all vessel movements prior to entry & departure

Contact on
VHF: channel 12
T: 01502 724712



email: southwoldharbour@waveney.gov.uk

HMS HARBOUR MARINE SERVICES LTD

- ANY REPAIR, RE-FIT, RESTORATION UNDERTAKEN
- 700 SQM UNDERCOVER WORKSHOPS
- ON-SHORE STORAGE FOR 60 VESSELS
- BOAT AND TRAILER PARK FOR ANGLING/SPORTS BOATS
- WELL STOCKED CHANDLERY (OPEN 7 DAYS A WEEK FROM APRIL-NOV. 6 DAYS IN WINTER)
- BROKERAGE

Harbour Marine Services Ltd,
Blackshore, Southwold Harbour,
Southwold, IP18 6BG
T: 01502 724721 F: 01502 722060
email: info@harbourmarine.co.uk

Visit our NEW website
www.harbourmarine.co.uk



Small Craft Deliveries

Navigation House, 4 Wilford Bridge Spur,
Melton, Woodbridge, Suffolk IP12 1RJ

- Admiralty Charts & Publications
- Dutch Charts
- Imray Charts
- ARCS, Vector & Electronic Chart Services
- Pilots & Digital
- Admiralty RYA Electronic Chart Plotter

T | 01394 382 600 W | www.scd-charts.co.uk

Fresh Fish & Shellfish SAMANTHA K'S



caught from our own boats

Open 9am – 5pm, 7 days per week

Tel: 01502 724000 - Blackshore, Southwold Harbour



Sole Bay FISH Co.

Suppliers of own caught fresh fish & shellfish

RESTAURANT SERVES COLD SEAFOOD PLATTERS
AND OYSTERS (BRING YOUR OWN BREAD AND WINE)
RESTAURANT OPEN TUES - SUN 12 - 3PM
SHOP OPEN 7 DAYS A WEEK

Shop | Restaurant | Mail Order

Tel - 01502 724241 | www.solebayfishco.co.uk

Blackshore, Southwold Harbour

Di's Tea Rooms

Breakfasts, Snacks, Lunches and Teas and Coffees
Open 9am - 5pm (except Wednesdays) all year round
Ferry Road, Southwold Harbour - Tel: 01502 722593



Sounding equipment supplied by

50th Anniversary
Your Favourite Boating Store Since 1962

www.seamarknunn.com

Southwold Approaches

April 2011 Edition
Survey undertaken 22nd March 2011



Southwold Harbour
Visitors Berths



Approach 330°(T)

Please take one
FREE PUBLICATION

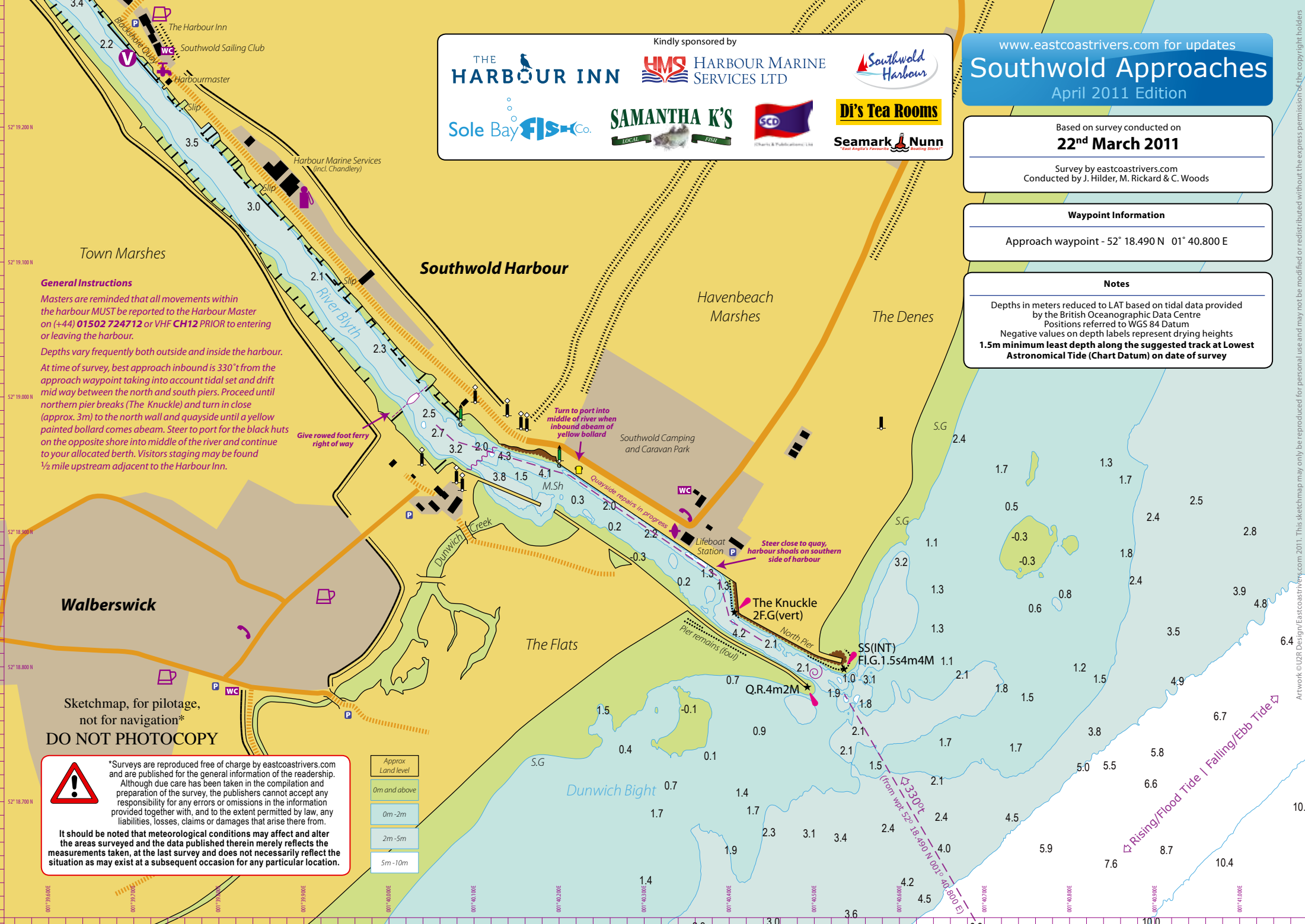
All donations to marine rescue services are greatly appreciated

Kindly sponsored by

Based on survey conducted on
22nd March 2011
 Survey by eastcoastdrivers.com
 Conducted by J. Hilder, M. Rickard & C. Woods

Waypoint Information
 Approach waypoint - 52° 18.490 N 01° 40.800 E

Notes
 Depths in meters reduced to LAT based on tidal data provided by the British Oceanographic Data Centre
 Positions referred to WGS 84 Datum
 Negative values on depth labels represent drying heights
1.5m minimum least depth along the suggested track at Lowest Astronomical Tide (Chart Datum) on date of survey



General Instructions
 Masters are reminded that all movements within the harbour **MUST** be reported to the Harbour Master on (+44) **01502 724712** or VHF **CH12** PRIOR to entering or leaving the harbour.
 Depths vary frequently both outside and inside the harbour.
 At time of survey, best approach inbound is 330° from the approach waypoint taking into account tidal set and drift mid way between the north and south piers. Proceed until northern pier breaks (The Knuckle) and turn in close (approx. 3m) to the north wall and quayside until a yellow painted bollard comes abeam. Steer to port for the black tufts on the opposite shore into middle of the river and continue to your allocated berth. Visitors staging may be found ½ mile upstream adjacent to the Harbour Inn.

Give rowed foot ferry right of way
 Turn to port into middle of river when inbound abeam of yellow bollard
 Quayside repairs in progress
 Steer close to quay, harbour shoals on southern side of harbour

Walberswick

Sketchmap, for pilotage,
 not for navigation*
DO NOT PHOTOCOPY

*Surveys are reproduced free of charge by eastcoastdrivers.com and are published for the general information of the readership. Although due care has been taken in the compilation and preparation of the survey, the publishers cannot accept any responsibility for any errors or omissions in the information provided together with, and to the extent permitted by law, any liabilities, losses, claims or damages that arise there from.
 It should be noted that meteorological conditions may affect and alter the areas surveyed and the data published therein merely reflects the measurements taken, at the last survey and does not necessarily reflect the situation as may exist at a subsequent occasion for any particular location.

Approx Land level
0m and above
0m -2m
2m -5m
5m -10m